

Mining *with* **Water**

Rock Hydro-Fracturing Systems
increase your mining production



Rock-Hydro Fracturing • 1000 H.P. Jet Boring • Up to 50,000 psi
Grout Plants, Mixers & Pumps • Up to 10,000 psi

ConMICO Inc.

With more than 42 years experience, ConMICO Inc. specializes in the custom design of heavy duty high pressure pump systems for the mining and large industrial equipment industries. As the Canadian representative for Hammelmann pumps and accessories, ConMICO brings a high standard of quality, reliability and service to all of its systems.

ConMICO's rugged designs also include hydrodemolition units which incorporate a high pressure water jet that removes concrete from sensitive structures needing repair - typically bridges, parking decks, dams, canals, tunnels, quays and jetties.

ConMICO's mining equipment ranges from 1000 HP Jet Boring systems used in underground uranium mines in Northern Saskatchewan to Hydrofracturing equipment used for copper mining in the mountains of Chile.

One of ConMICO's latest designs takes a twist on Hydrofracturing technology which has been used extensively in the oil and gas industry and has redeveloped it to more efficiently extract copper reserves.

Our products include durable, lightweight high pressure grout pumps and grout plants for use in rock bolting, tunnel forming and repairs, soil consolidation, back filling and grouting of cracks in tunnels or mine shafts. These systems can be electric hydraulic, pneumatic or diesel.

Electric hydraulic pumps systems, the newest addition to our product line are highly efficient, environmentally clean and operator friendly. These systems are normally available for pressures up to 4500 psi and 32 GPM

For these pump systems ConMICO also manufactures high speed colloidal mixers, double drum mixers and agitators.

High pressure accessories such as packers, valves, high pressure hose and fittings are available from their stock.

ConMICO also engineers and manufactures compact and dependable high pressure water power-packs for underground mining and drilling. Systems are available up to 1000 HP and pressures up to 50,000 PSI. Some systems are available for rental and lease and ConMICO provides 24 hour access for pumps, parts and service.

Contents

Innovative Technology	2
Hydro Fracturing Machine	3
Hydro Fracture Systems	4
Jet Boring High Pressure Water System	5
Plunger Pumps	6
Co-Pak™ Grouting Plant	7
MD-400 Paddle Mixer	8
Grout Injection Pump	9
Spot Location Grout Injection Pump	10
Pneumatic Cement Injection Pump	11
Electro-Hydraulic Cement Injection Pump	12
Colloidal SD4 / SD6	13
Colloidal Mixing Information	14
Concrete Equipment	15
Shotcrete Pump	16
Diesel Powered Solutions	17
Electric Powered Solutions	18

Innovative Technology

ConMICO's latest development project is a hydro-rock fracturing machine to meet the high production mining requirement for block caving pre-conditioning applications.

ConMICO develops and manufactures high pressure water jet systems up to 50,000 psi and up to 1200 H.P. for jet boring, underground hydraulic power units, coating removal, de-scaling and cutting.

ConMICO also specializes in custom-made durable, lightweight grouting and cement injection plants for use in soil consolidation, jet-grouting to 10,000 psi, pile formation, tunnel forming and repairs, forming water curtains, back filling and grouting of cracks in tunnels and mine shafts.

For grouting systems, ConMICO manufactures high speed colloidal mixers, double drum mixers, agitators, as well as accessories including packers, valves and high pressure fittings.

Shotcrete and concrete pumps are also available.



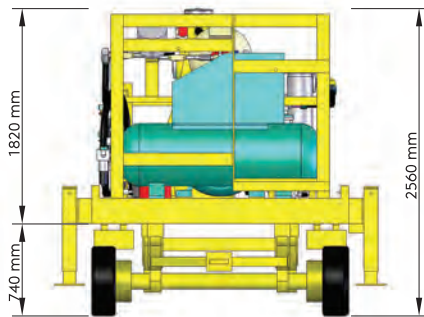
400 H.P. Rock Fracturing Rig Codelco,
El Teniente Division, Chile



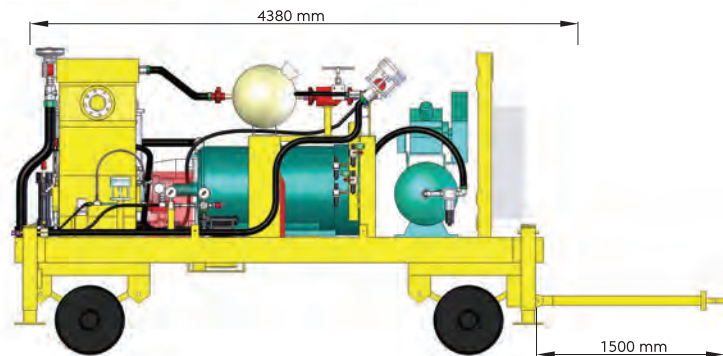
Hydro Fracturing Machine

Our 400 H.P. Portable Hydro-fracturing rig with its low profile is suitable for use in small tunnel applications. With all the electrical hardware and computer systems on board, it is a self-contained system and only requires the operator to supply electrical power.

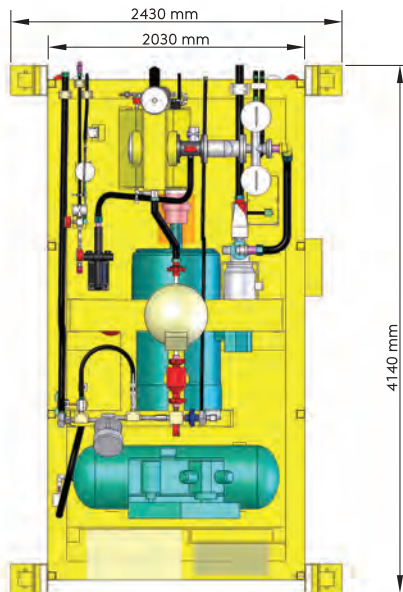
Front View



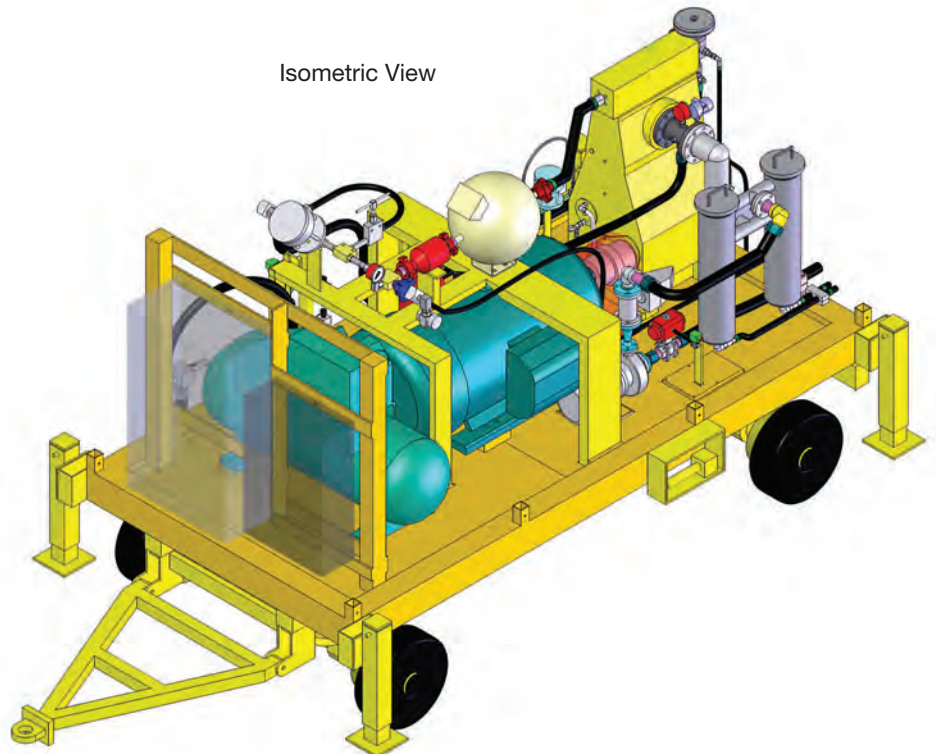
Side View



Top View



Isometric View



Hydro Fracture Systems

Hydro-fracturing is a method of improving the yield of various types of wells by opening and flushing out previously closed fractures with high pressure water. We have available a range of high pressure inflatable packers suitable for this and similar applications such as stress testing, de-gassing coal bed methane and block caving. Standard sizes are available for bores from 30 mm (1.2") to 200 mm (8") diameter with pressure ratings up to 700 bar (70MPa or 10,000 psi)

Fracturing or Stress Testing is a method employed in geotechnical investigations to assist in the determination of in-situ rock strength. The basic method is to use inflatable packers to isolate the section of interest, then generate a fracture in this section by water pressurization and measure the orientation of this fracture using an impression packer. (An impression packer has a cover made of a semi-cured rubber that retains an impression of the borehole wall when deflated. On packer removal this impression can be examined to determine its orientation.) This information allows determination of the principal in-situ stress of the rock mass. There are packer systems and associated hardware to suit such testing in all hole sizes from 30 mm to 150 mm in diameter.

APPLICATIONS

- Hydraulic pre-conditioning block caving

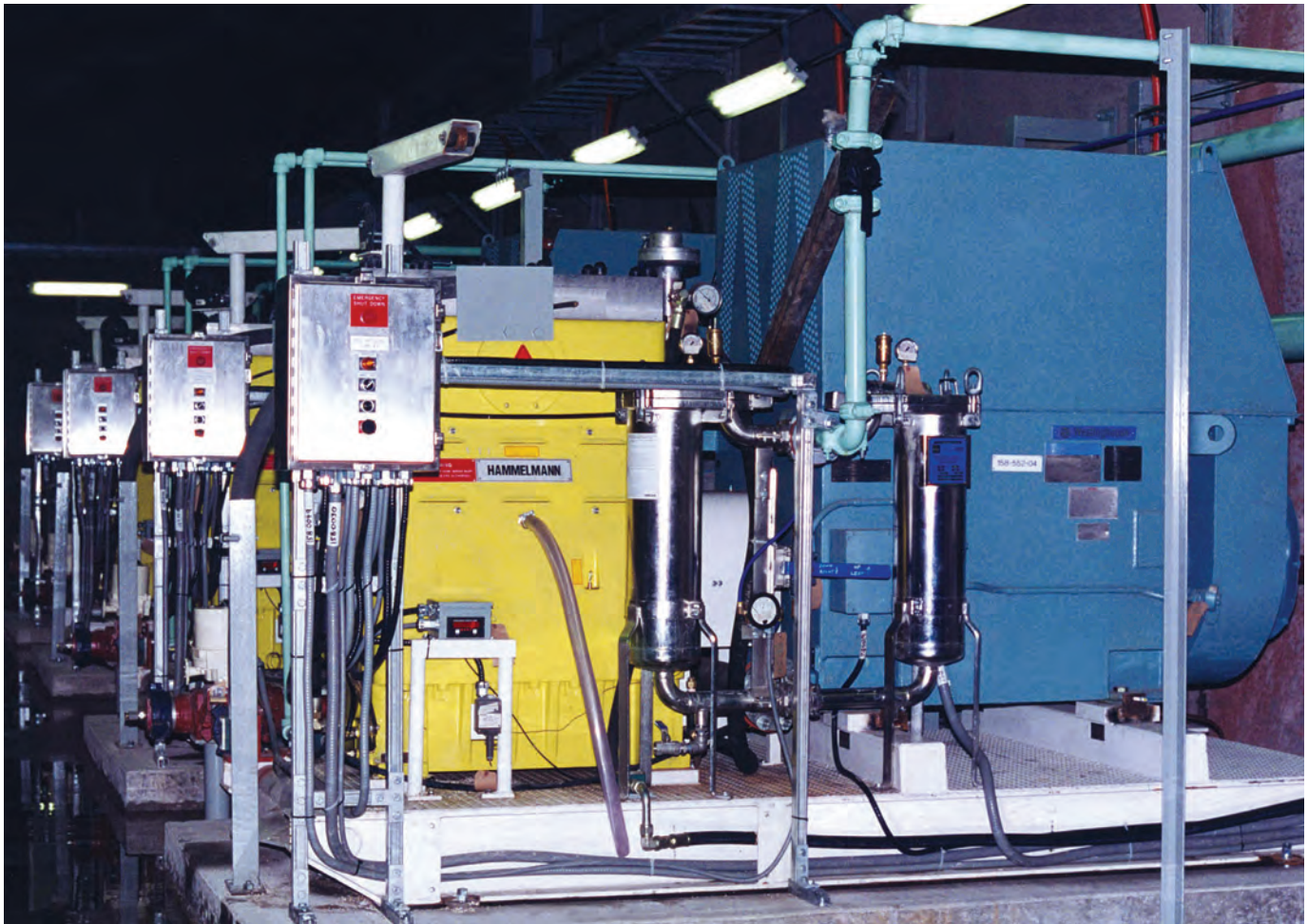
FEATURES

- 70 mm (for NQ) and 89 mm (for HQ) diameters are standard
- Pressures up to 12,000 psi (850 bar)
- Choice of injection sub formats
- Replacement element service
- "Top Wiper" to minimize rock particle puncture
- Choice of packer lengths and injection (test) zone lengths
- Operations Manual
- Stainless steel internal composition



Jet Boring High Pressure Water System

Mining uranium ore with high pressure water produces a slurry that can be readily transported by pipeline. This cost effective method of pumping slurry away from the mining operation provides effective radiation containment and complete dust elimination.



800 H.P. Jet Boring High Pressure Water System Cigar Lake, Saskatchewan, Canada

Your **Plunger Pump** Source



HDP 255: Plunger Process Pump

APPLICATIONS

Waterblast

- Up to 50,000 psi

Cleaning systems

- Concrete hydro demolition
- De-scaling, Paint/Coating Removal
- Diesel or electric power
- Stationary or Mobile

Pump Systems

- Up to 50,000 psi
- For jet boring
- Hydrofracturing of Rock
- Jet cutting - water or abrasive
- Surface descaling/coating removal, manual or automatic
- Process pump systems

Oil and Gas

- Chemical injection to 25,000 psi
- Methanol, asphaltine inhibitors, LDHI, Paraffin inhibitors, saltwater scale squeeze, diesel, CO2, produced water

Plunger Pumps

- Bare shaft, all applications
- Hammelmann,
 - pressures to 50,000 psi
 - horsepower to 1,000
- HPP
 - pressures to 15,000 psi
 - horsepower to 110
 - 3 year warranty



HDP 755: Plunger Process Pump

Co-Pak™ “Ready to use” Grouting Plant

Series 1500

This heavy duty, skid mounted grout plant combines a multi-purpose, paddle-style mixer with a high-pressure, double acting injection pump. The pumps are positive displacement, ball-valve type and are easily cleaned without stripping simply by flushing clean water through the intake port while operating. Totally self-contained, these units are equally at home on construction sites or in mine applications and can handle liquid cement, cement sanded slurries, or epoxies under the worst conditions.



FEATURES

- Quick disconnect fittings throughout
- Double-Tank paddle mixer
- Hardened valve seats for long life
- Easy field maintenance
- Dynamic pressure adjustment range
- Non-plugging, flush clean with water
- Constant pressure regulator
- Forklift chases and lift lugs available

TECHNICAL SPECIFICATIONS

Model 1500-MD 121	8 GPM @ 2000 psi	30.2 LPM @ 138 bar	Pneumatic-Hydraulic
Model 1500-MD 122	16 GPM @ 1000 psi	60.4 LPM @ 69 bar	Pneumatic-Hydraulic
Model 1500-MD 141	8 GPM @ 2000 psi	30.2 LPM @ 138 bar	Electric-Hydraulic
Model 1500-MD 142	16 GPM @ 1000 psi	60.4 LPM @ 69 bar	Electric-Hydraulic

Dimension	Size will vary. Approximately 98" x 63" x 67"	2489 mm x 1600 mm x 1702 mm
Shipping Weight	600 lbs ships LTL (skidded)	273 kg
Fittings	Choice of SAE or metric (specify) 1" Output standard	
Performance	Rated to available air, mix and line diameter	
Operation	In-line protected pressure gauge, demand feed from nozzle shut-off	

The **Co-Pak** Series 1500 incorporates both the mixer and pump equipment assemblies necessary to provide a continuous supply of grout, cement slurries and epoxies, without variation in material homogeneity.

The compact design of the unit allows it to be placed in close proximity to the workface for maximum control and productivity. The system is available in either electric or pneumatic version.

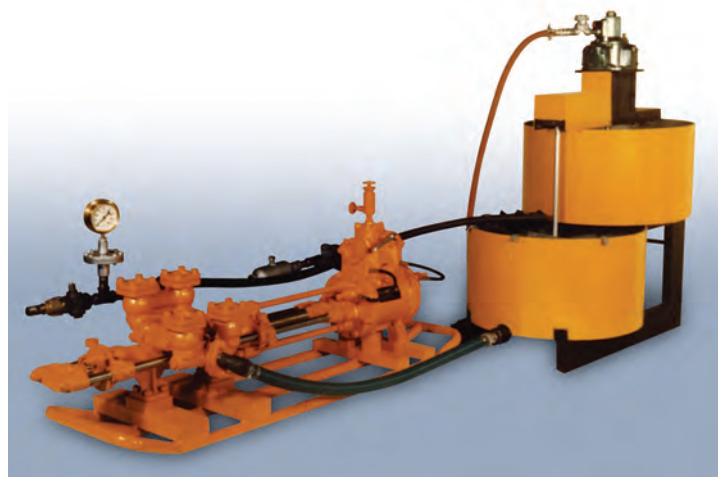
MD-400 Paddle Mixer

Series 4500

The **MD-400** Series 4500 paddle mixers utilize a unique two-tank design to enable the continuous batching of homogenous solution. The slurry is prepared in the upper tank where it is thoroughly mixed by the continual cutting action of the rotor blades, and is then sieved and transferred to the lower tank where it is maintained in a consistent mixed condition. The slurry can then be sucked from the lower tank by the injection pump, while a replacement batch is being prepared in the upper tank.

FEATURES

- Quick disconnect fittings throughout
- Double-Tank paddle mixer
- Grout charging plate
- Easy field maintenance & cleaning
- Extractable sieve grate
- Adjustable tank to tank transfer valve
- Forklift chases and lift lugs
- Water intake manifold cocks for mixing



TECHNICAL SPECIFICATIONS

Model 4500-MD 400	14.12 cu ft tank capacity	400 L
Dimension	Approximately 57" x 41" x 65"	1448 mm x 1041 mm x 1651 mm
Shipping Weight	250 lbs ships LTL (skidded)	114 kg
Fittings	Choice of SAE or metric (specify) 1" water, 2" outlet	
Performance	Blade speed up to 95 RPM	
Operation	Electric or pneumatic powered	

The superior design of the MD-400 Series 4500 paddle mixer ensures mixture consistency reducing the potential for de-mixing of components with uncontrolled and over aggressive paddle activity. The slurry is maintained in a controlled suspension ready on demand by the pump.

Grout Injection Pump

Series 2500W

The ConMICO 2500W series is lightweight, readily portable and robustly constructed. In combination with one of our 2500M mixers it is mainly used for full-column grouting for cable anchoring and for spraying materials. Combining the air-motor with different riser-tube assemblies (fluid sections) adapts the pump to suit any particular need. The most important are tabled below.

All the pumps are equipped with a VTO lubricator/filter to ensure clean lubricating air operates the pump. The riser-tube is fitted with a clamp and allows removal of the tube for cleaning without the need of special tools. The pumps come with hoses and fittings to suit each application and can handle a variety of mixes, from a thin liquid to a viscous grout (1:3 water to cement). Other models can be manufactured to meet special needs (eg. coal mining).



TECHNICAL SPECIFICATIONS

Height (meters)	1	3.3
Weight kgs (lbs)	20	44
Riser Tube Length mm (in)	580	23
Riser Tube Options mm (in)	320	12.6
Riser Tube Diameter mm (in)	51	2
Stroke Length mm (in)	80	3
Stroke per Minute (5 bar/90 psi)	180	-
Swept Volume ml (cubic in)	163	9.9

Pumping Capacity

Thick, Viscous Material	9	2.4
Thin, Watery Material	30	7.8
Air Requirements Kpa (psi) min	420	60
Delivery Pressure (x line pressure)	7.1	-
Air Consumption cubic m/sec (CFM)	0.06	12
Horizontal Pumping Distance m (ft)	90	300
Vertical Pumping Distance m (ft) Max	14	46
Aggregated Size mm (in) Max	6	1/4

Spot Location Grout Injection Pump

Series 2500W

The 2500W Series Spot Location grout injector system is the perfect solution to any mining, construction repair, or anchor bolt application calling for low volume, portable injector system that can hand carried right up to the workface. Weighing only 20 kg (empty), the 2500W requires only a simple air source to provide a continuous feed of grout or epoxy material. Its simple, but rugged construction requires a minimum of maintenance and has been designed for easy field replacement of parts and seals if required using off-the-shelf-components.

Low volume-high pressure pumping of all viscous materials.

Portable - Simple quick-connect air powered.

Easy dump hopper for continuous feed.

Slow-speed bottom mixing.



Feature Packed Design

- Easily replaced rod seals
- Runs on almost any air pressure

FEATURES

- Quick disconnect fittings throughout
- Adaptable to any mix viscosity
- Built to withstand rough handling
- Easy field maintenance
- One-valve operation
- Non-plugging-flush clean with water
- Self clearing mixer-uniform mix consistency
- Adapts to all nozzle delivery systems

TECHNICAL SPECIFICATIONS

Model 2500W	4 GPM, 710 psi Max	15 LPM, 49 bar Max
Dimension	30" x 30" x 36"	762 mm x 762 mm x 914 mm
Shipping Weight	75 lbs ships LTL (crated)	34 kg
Fittings	Choice of SAE or metric (specify) 1" Output standard	
Performance	Rated to available air, mix and line diameter	
Operation	Does not require air - oil lubrication, Automatic air dump valve system	

The Series 2500W spot location injector system is a fully operational "grout plant" embodied in a compact and highly portable design. It was created to satisfy the need for a high pressure injection system capable of being moved into small cramped quarters, located on construction sites where anchor bolts or additional rods are deemed needed - often in elevated environments.

Its simple "bucket and sump" design can be easily carried by just one man and offers a quick and cost effective solution requiring only a standard oiled or non-oiled air source meeting a minimum of 25 cfm (.014 m³/sec) for pump and mixer.

Pneumatic Cement Injection Pump - All Steel Construction

This pump embodies the traditional design style of a high pressure grout and cement slurry pump. Its all steel construction gives high strength, long life wearing parts and low maintenance features as opposed to normal cast iron and aluminum pumps. This versatile steel double acting pump is an ideal solution for applications requiring continuous high pressure. The unique opposing cylinders provide an even flow of material at consistent high pressure, with a choice of either pneumatic or electric power. The heavy-duty steel design has been engineered to provide long trouble free life in the most extreme environments. The unit includes a hydraulic end specifically built for easy cleaning and maintenance with the application of SUPER STAKO STAPLE joints.



FEATURES

- Quick disconnect fittings throughout
- Adaptable to any mixing tank feeder
- Hardened valve seats for long life
- Easy field maintenance
- Dynamic pressure adjustment range
- Non-plugging, flush clean with water
- Constant pressure regulator
- Adapts to all delivery systems

TECHNICAL SPECIFICATIONS

Model 2500-PCS-11	8 GPM @ 2000 psi	30 LPM @ 138 bar
Model 2500-PCS-12	20 GPM @ 1000 psi	60 LPM @ 69 bar
Model 2500-PCS-13	20 GPM @ 2000 psi	60 LPM @ 138 bar

Dimension 68 1/4" x 21 3/4" x 27 1/2" 1730 mm x 550 mm x 700 mm

Shipping Weight 400 lbs ships LTL (skidded) 136 kg

Fittings Choice of SAE or metric (specify) 1" Output standard

Performance Rated to available air, mix and line diameter

Operation In-line protected pressure gauge, demand feed from nozzle shut-off

The Series 2500PCS pump embodies the traditional design style of a high-pressure grout and slurry pump, Its double acting cylinder provides greater throughputs at proportionately higher pressures and at lower energy requirements. This unit is available in either stand-alone systems or incorporated into a dedicated grouting plant. Its heavy-duty design and construction have been engineered and crafted to provide years of productive operation and can be field maintained with ease.

Electro-Hydraulic Cement Injection Pump

Series 2500H

These self-powered, double-acting pumps are an ideal solution for applications requiring high volume, continuous pressure pumping of grouts, cement slurries or epoxies. Driven by a reliable 10 hp electro-hydraulic power plant, the opposing twin cylinders provide a smooth even flow of material at consistent pressure. The heavy duty skid design has been engineered to provide a long, trouble-free life in the most extreme of environments. This unit features a conMICO exclusive - a self-contained, pilot driven manifold system that drives the reciprocating double acting pump cylinders.

The completely sealed control system is protected against failure from cement spillage and accidental impact. The twin valve chambers feature quick change Super Stako fittings for ease of cleaning and seat replacement.

FEATURES

- Standard SAE fittings throughout
- Adaptable to any mixing tank feeder
- Hardened valve seats for long life
- Quick clean, easy field maintenance
- Smooth operating, reciprocating hydraulic pilot valve manifold
- Dynamic pressure adjustment range
- Non-plugging-flush clean with water
- Constant pressure regulator
- Integral heat exchanger ensures constant hydraulic oil temperature and pressure



Super Stako quick change O-Ring seals throughout

TECHNICAL SPECIFICATIONS

Model 2500H-14	22 GPM @ 1000 psi	83 LPM @ 69 bar
Model 2500H-15	16 GPM @ 1600 psi	60 LPM @ 110 bar
Model 2500H-16	10 GPM @ 2000 psi	38 LPM @ 138 bar
Model 2500H-X	5 GPM @ 4000 psi	19 LPM @ 2760 bar
Dimension	90" x 360" x 48"	2286 mm x 914 mm x 1219 mm
Shipping Weight	450 lbs ships LTL (Skidded)	205 kg
Fittings	Choice of SAE or metric (specify) 1" Output standard	
Performance	Production rates quoted for electro-hydraulic model rated to mix and line diameter	
Operation	In-line protected pressure gauge demand feed from nozzle shut-off	

The Series 2500H double acting cylinder pump embodies a smoothly operating, pilot driven, sealed manifold design to provide greater throughputs at proportionately higher pressures. This unit is available in a low energy, electro-hydraulic version and is an excellent grout and slurry pump choice for either stand-alone systems or incorporated into a dedicated grouting plant. Its heavy-duty skid design and construction have been engineered and crafted to provide years of productive operation, and can be field maintained with ease.

conMICO Colloidal SD4 / SD6

SINGLE DRUM COLLOIDAL GROUT MIXER

This machine is a single drum high speed, high shear unit designed for the efficient production of cement based grouts.

The finished product exhibits colloidal properties and is nearly immiscible in water.

The machine can handle cement/sand ratios up to 1:3 by weight and produce pumpable mixtures. It will mix a wide range of materials such as Cement / P.F.A. Preblends, Bentonite, Lime or Chemicals.

The machine illustrated is a skid mounted unit for tunnel or mining applications.

The unit can be supplied on a site mobile chassis if required.

SD4 and SD6 mixers are designed and constructed to withstand any arduous site condition.



TECHNICAL SPECIFICATIONS

Dimensions

Length: 1.3 m
Width: 0.85 m
Height: 1.25 m

Power Unit

20 H.P. Air motor
11 KW Electric Motor
15 HP Diesel Engine

Output

2.5 cu.m / hour
Pressure 2.0 bar

Batch Capacity

The mixing tank capacity is 120 / 150 litres



Colloidal Mixer with Agitator

Colloidal Mixing Process

Pressure Discharge

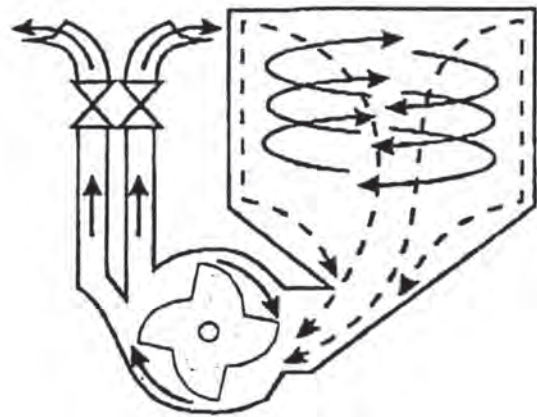
The pumping action of the mixer enables rapid transfer of mixed materials out of the mixer into a storage tank or directly to the point of use.

Proven Design

High shear mixers are now accepted as an industry standard.

Reliability

The combination of robust design and ready availability of spare parts ensures long life and reliability.



High Strength Grouts

The high shear mixing action is capable of mixing grouts of lower water/cement ratios, resulting in high strength grouts.

Cost Savings

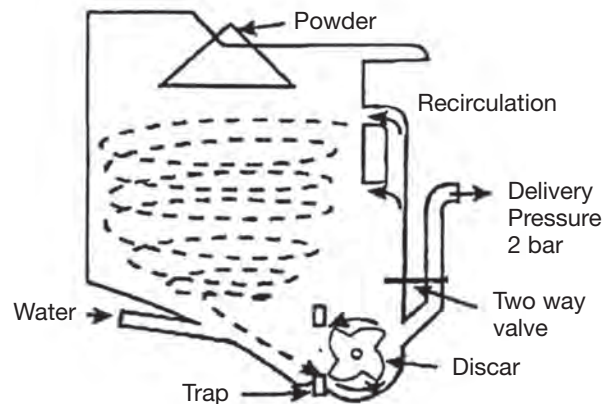
The combined effect of the highly efficient mixing action and the ability to mix low water/solids ratios permit a reduction in the cement content for a given strength requirement. The cement is replaced by a less costly filler such as sand or PFA.

Optimum Mixing

The unmixed grout is repeatedly recirculated through a high shear zone within the mixer. This technique breaks down the cluster of dry particles (agglomerates) and ensures maximum interdispersion of fluids and solids.

Minimal Bleed

The combination of low water/cement ratios and efficient mixing ensures that more of the water is absorbed by hydration thus minimizing bleed.



Immiscible with Water

The colloidal properties of the mixed grout render it virtually immiscible with water and ideal for underwater grouting.

Minimal Dilution by Groundwater

BS8081 recommends the use of high shear mixing for the grouting of anchors in water bearing ground conditions because dilution is minimized.

Speed

The vortex action inside the mixing tank rapidly assimilates the powder materials into the high shear mixer. This results in very rapid mixing of a batch, in as little as 15 seconds.

Your **Concrete Equipment Source**

THE CONTRACTOR'S EQUIPMENT SUPPLIER FOR:

Gunite

- Continuous feed, high volume
- Portable on-site mixers

Shotcrete

- Wet or dry

Plaster

- Stucco, mortar
- Mixers and sprayers

Pressure Grout

- Portable hand pumps
- Power by air, electric-hydraulic
- Gasoline or diesel
- Pressures to 5000 psi

Concrete Pumps

- Pea gravel to 1 1/2" minus rock to 80 cu.yd/hr

Concrete Cleaning/Coating Removal

- Water pressures to 50,000 psi

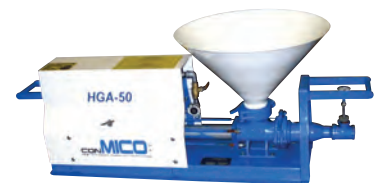
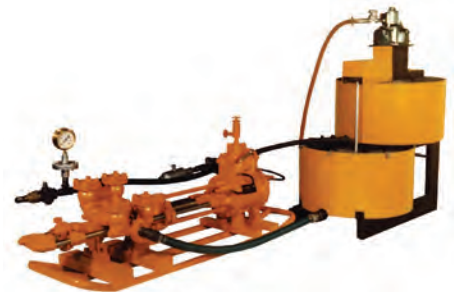
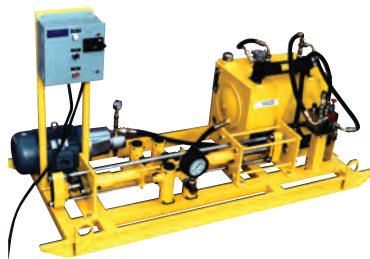
Concrete Hydro-Demolition

- Up to 800 h.p. with robot

Parts & Accessories

- Hoses, nozzles, adaptors, valves, connectors, shotcrete parts

Quick Delivery • Easy Ordering • Technical Assistance



Shotcrete Pump



FEATURES

- Heavy-Duty Design
- High Pressure and Production Rate
- Perfect for Shotcrete and Slabs
- Pumps 3/8" Pea Rock and 3/4" Material
- Optional Air Vibrator
- Remix Agitator (standard on model 636)

**SHOTCRETE
SLAB POURS
PEA-ROCK
CONCRETE REPAIR
RETAINING WALLS
GROUTING**

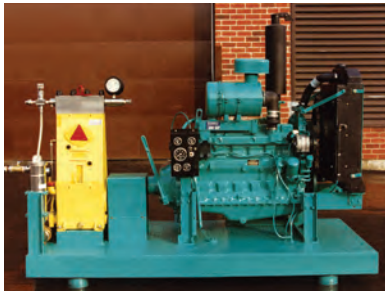
TECHNICAL SPECIFICATIONS

	Model 536	Model 636
Max. Output	36 cu yd/hr (28 m ³ /hr)	50 cu yd/hr (38 m ³ /hr)
Pressure	900 psi (62 bar)	800 psi (55 bar)
Max Aggregate Size	3/4" minus (25 mm)	3/4" minus (25 mm)
Concrete Cylinder Diameter	5" (127 mm)	6" (152 mm)
Concrete Cylinder Stroke	36" (914 mm)	36" (914 mm)
Full Flow S-Tube	5" (127 mm)	6" (152 mm)
Discharge Outlet Size	5" (127 mm)	5" (127 mm)
Power Source	Diesel 60 hp	Diesel 80 hp
Length	162"	162"
Width	70"	70"
Weight	4,000 lb (1,814 kg)	4,300 lb (1,950 kg)
Tires	15"	15"
Axle	Single	Single

Maximum output and pressure cannot be reached simultaneously. Performance will vary depending on power unit, hydraulic pressure, cycle rate, mix design and placement line.

conMICO Diesel Powered “Workhorse” Solutions

All conMICO custom pump systems feature only brand-name assembly components such as CAT and Detroit diesel power plants and Hammelman high pressure pumps. Custom designed pump pressure systems are available up to 36,000 psi. Components and parts are readily available from ConMICO in Canada, and from other pump and equipment maintenance suppliers around the World.



Model 125 HP DSL

A diesel powered, portable pump system producing an output capacity of 16 GPM (US) @ 10,000 psi.

The perfect power plant and pump selection, used in mining environments for general cleaning and equipment maintenance.



Model 200 HP DSL

A 24 GPM (US) @ 10,000 psi capacity pump system, truck mounted for easy maneuverability around all industrial environments.

Ample capacity to power two hand-held lances, this unit has found favor in automotive plants where general maintenance and coating removal is required.



Model 300 HP DSL

A rugged, mobile pump system featuring a variable speed transmission capable of producing pump pressures and volumes of: 10 GPM (US) @ 10,000 psi, 24 GPM (US) @ 10,000 psi, 32 GPM (US) @ 8,000 psi, 36 GPM (US) @ 6,000 psi and 40 GPM (US) @ 5,000 psi.

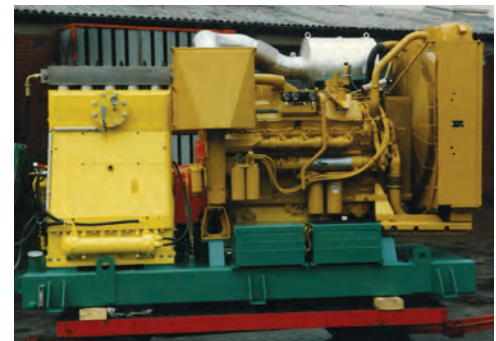
This towable vehicle is “highway approved” and is a perfect solution for contract cleaning projects in heavy industry.



Model 350 HP DSL

A heavy-duty, mobile pump system featuring a variable speed drive. The automatic transmission is capable of producing pump pressures and volumes of: 20 GPM (US) @ 20,000 psi, 25 GPM (US) @ 15,000 psi, 33 GPM (US) @ 10,000 psi and 40 GPM (US) @ 8,000 psi.

This towable vehicle is “highway approved” and has been used extensively by hydro-electric dam utilities for cleaning equipment, water tunnel flushing and in the repair of concrete structures.



Model 600 HP DSL

A skid-mounted portable pump system extensively used in the construction industry to power concrete demolition equipment. It features both high-pressure and high-volume output rated at 40 GPM (US) @ 21,750 psi.

conMICO Electric Powered “Workhorse” Solutions

All conMICO custom pump systems feature only brand-name assembly components such as WEG, Lincoln and Westinghouse power plants and Hammelman high pressure pumps. Custom designed pump pressure systems are available up to 36,000 psi. Components and parts are readily available from ConMICO in Canada, and from other pump and equipment maintenance suppliers around the World.



Model 75 HP EP

An electric powered, highly transportable pump system producing an output capacity of 7.5 GPM (US) @ 15,000 psi.

This system is used by utility companies in nuclear power plant installations to decontaminate reactor tools.



Model 75 HP EP Skid

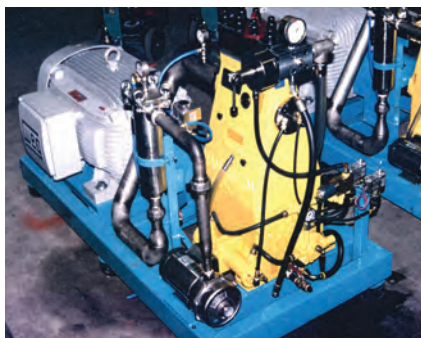
A portable pump system extensively used in the mining and construction industry to power jack-leg drill equipment as an alternative to pneumatic or hydraulic powered systems. It features a high-pressure and high-volume output rated at 36 GPM (US) @ 3,000 psi.



Model 100 HP EP

An electric powered, easily transportable pump system producing an output capacity of 14 GPM (US) @ 10,000 psi.

This system has been used by several utility companies in nuclear power plant installations to decontaminate reactor tools.



Model 200 HP EP Skid.

This version of the 200 HP pump system is a heavy-duty, high capacity pump system used in many automotive installations as a central feed source for plant removal and cleaning systems. Mounted on a structural steel frame with vibration isolation pad design.

The 200 HP electric motor and pump assembly is capable of delivering 28 GPM (US) @ 11,000 psi pressure.



Model 200 HP EP Wagon

The perfect pump solution where both performance and space is a consideration. The wagon mounted pump system is highly maneuverable in tight spaces and its 200 HP electric motor delivers 28 GPM (US) @ 11,000 psi.

The model is a favorite of automotive assembly and finishing plants for general cleanup, paint removal, grate and paint booth maintenance.



Model 300 HP EP

A permanently mounted central supply system commonly found in nuclear reactors for chemical and reactor tank cleaning operations.

Its 300 HP power system can deliver 40 GPM (US) @ 10,000 psi.

Constructed on a heavy duty steel frame and equipped with multiple isolation pads for minimum vibration transfer throughout the installation area.

